

Tonic & Dominant Seventh Arpeggios in all Major Keys for Clarinet

Travis A. Miller

C Major

Tonic



Dominant 7th

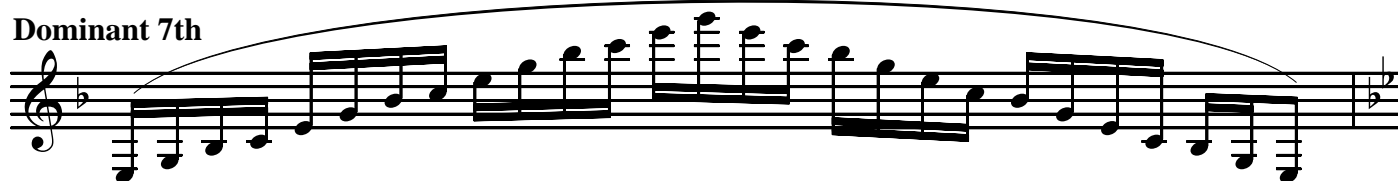


F Major

Tonic

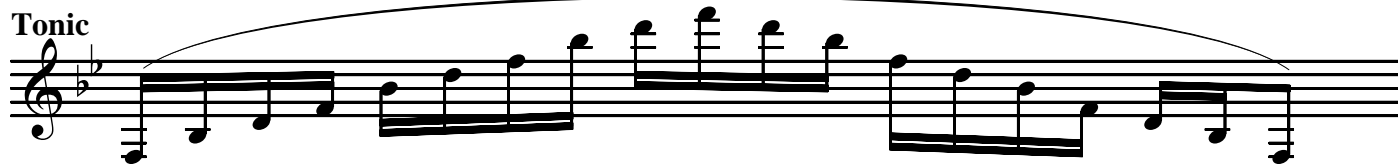


Dominant 7th



Bb Major

Tonic



Dominant 7th



Eb Major

Tonic



Musical notation for the Tonic arpeggio in Eb Major. The key signature has three flats (Bb, Eb, Ab). The melody is written on a single staff in treble clef, starting on the middle C (G4) and ascending to the G5. The notes are G4, Ab4, Bb4, C5, D5, Eb5, F5, G5. The melody is marked with a slur and a fermata.

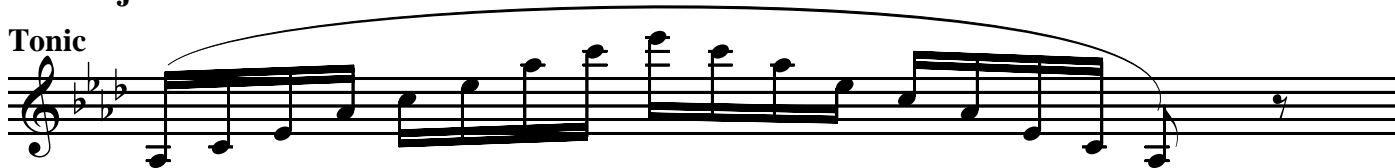
Dominant 7th



Musical notation for the Dominant 7th arpeggio in Eb Major. The key signature has three flats (Bb, Eb, Ab). The melody is written on a single staff in treble clef, starting on the G4 and ascending to the G5. The notes are G4, Ab4, Bb4, C5, D5, Eb5, F5, Gb5. The melody is marked with a slur and a fermata.

Ab Major

Tonic



Musical notation for the Tonic arpeggio in Ab Major. The key signature has four flats (Bb, Eb, Ab, Db). The melody is written on a single staff in treble clef, starting on the middle C (G4) and ascending to the G5. The notes are G4, Ab4, Bb4, C5, D5, Eb5, F5, G5. The melody is marked with a slur and a fermata.

Dominant 7th



Musical notation for the Dominant 7th arpeggio in Ab Major. The key signature has four flats (Bb, Eb, Ab, Db). The melody is written on a single staff in treble clef, starting on the G4 and ascending to the G5. The notes are G4, Ab4, Bb4, C5, D5, Eb5, F5, Gb5. The melody is marked with a slur and a fermata.

Db Major

Tonic



Musical notation for the Tonic arpeggio in Db Major. The key signature has five flats (Bb, Eb, Ab, Db, Gb). The melody is written on a single staff in treble clef, starting on the middle C (G4) and ascending to the G5. The notes are G4, Ab4, Bb4, C5, D5, Eb5, F5, G5. The melody is marked with a slur and a fermata.

Dominant 7th



Musical notation for the Dominant 7th arpeggio in Db Major. The key signature has five flats (Bb, Eb, Ab, Db, Gb). The melody is written on a single staff in treble clef, starting on the G4 and ascending to the G5. The notes are G4, Ab4, Bb4, C5, D5, Eb5, F5, Gb5. The melody is marked with a slur and a fermata.

A Major

Tonic

Musical notation for the Tonic arpeggio in A Major. The key signature has three sharps (F#, C#, G#). The melody is written on a treble clef staff and is enclosed in a slur. The notes are: A4, B4, C#5, D5, E5, F#5, G#5, A5, G#5, F#5, E5, D5, C#5, B4, A4.

Dominant 7th

Musical notation for the Dominant 7th arpeggio in A Major. The key signature has three sharps (F#, C#, G#). The melody is written on a treble clef staff and is enclosed in a slur. The notes are: A4, B4, C#5, D5, E5, F#5, G#5, A5, G#5, F#5, E5, D5, C#5, B4, A4, G#4, F#4, E4, D4, C#4, B3, A3.

D Major

Tonic

Musical notation for the Tonic arpeggio in D Major. The key signature has two sharps (F#, C#). The melody is written on a treble clef staff and is enclosed in a slur. The notes are: D4, E4, F#4, G#4, A4, B4, C#5, D5, C#5, B4, A4, G#4, F#4, E4, D4.

Dominant 7th

Musical notation for the Dominant 7th arpeggio in D Major. The key signature has two sharps (F#, C#). The melody is written on a treble clef staff and is enclosed in a slur. The notes are: D4, E4, F#4, G#4, A4, B4, C#5, D5, C#5, B4, A4, G#4, F#4, E4, D4, C#4, B3, A3, G#3, F#3, E3, D3, C#3, B2, A2.

G Major

Tonic

Musical notation for the Tonic arpeggio in G Major. The key signature has one sharp (F#). The melody is written on a treble clef staff and is enclosed in a slur. The notes are: G4, A4, B4, C#5, D5, E5, F#5, G5, F#5, E5, D5, C#5, B4, A4, G4.

Dominant 7th

Musical notation for the Dominant 7th arpeggio in G Major. The key signature has one sharp (F#). The melody is written on a treble clef staff and is enclosed in a slur. The notes are: G4, A4, B4, C#5, D5, E5, F#5, G5, F#5, E5, D5, C#5, B4, A4, G4, F#4, E4, D4, C#4, B3, A3, G3, F#3, E3, D3, C#3, B2, A2.